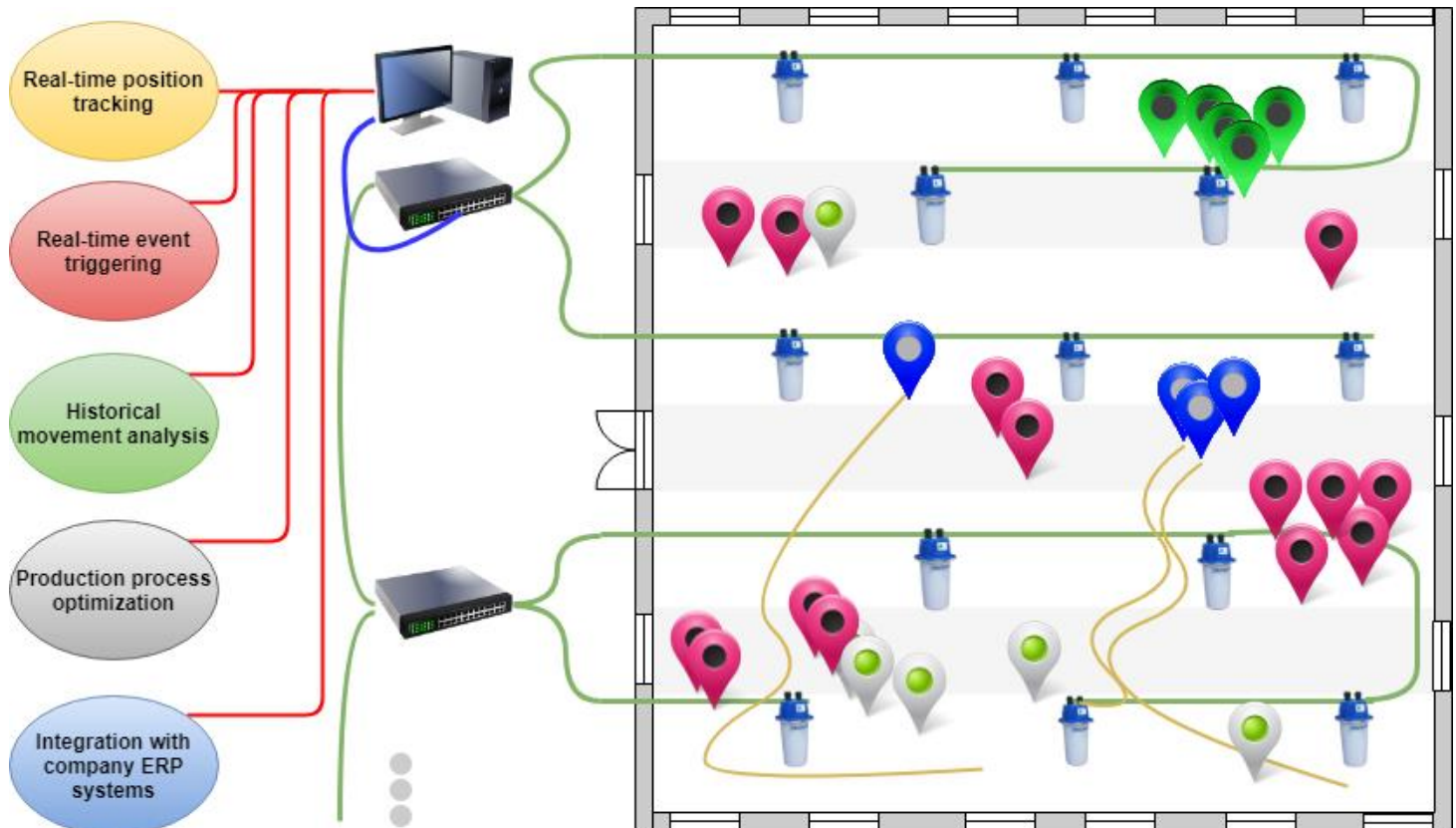


RTLS Usage

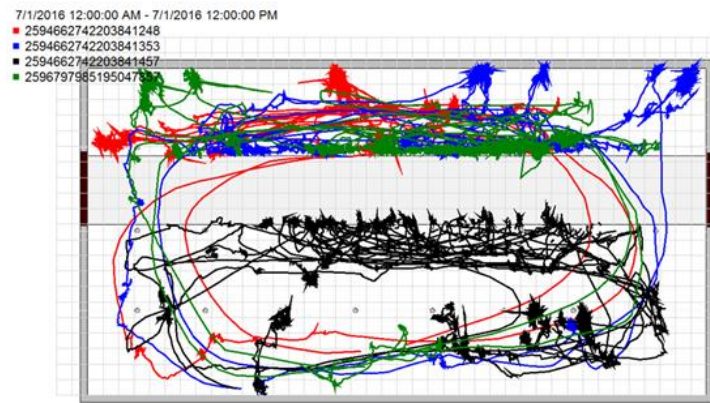
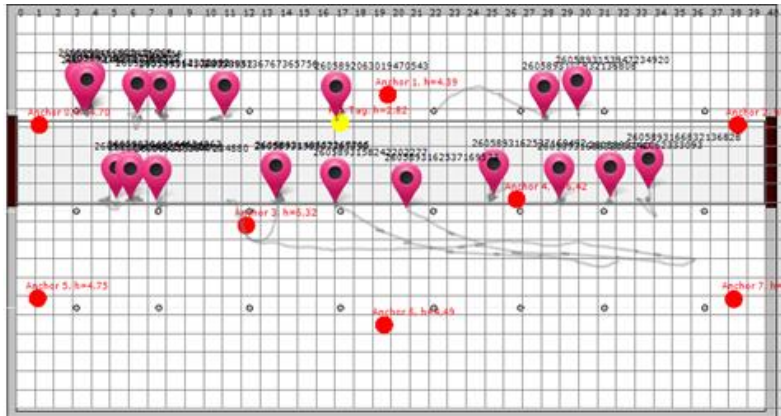
Possible RTLS Utilization

- **Production monitoring / optimization**
- **Logistics**
- **Personnel/patient monitoring**
- **Position-controlled control**



Real time objects tracking:

- 15 cm accuracy
- Tag reading range up to 50m
- Detailed real-time tag position information
- Real-time path observation

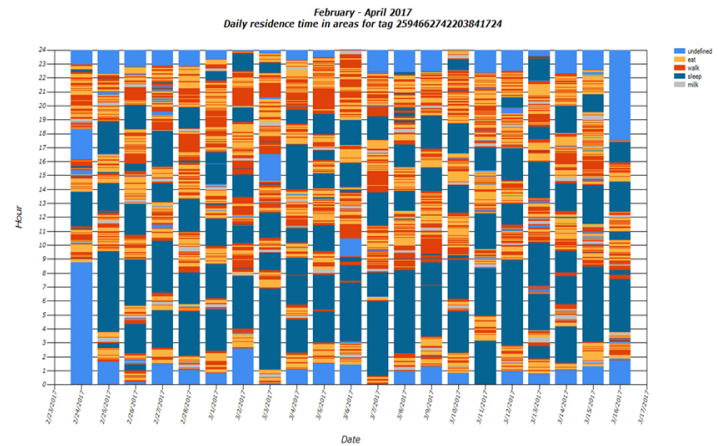
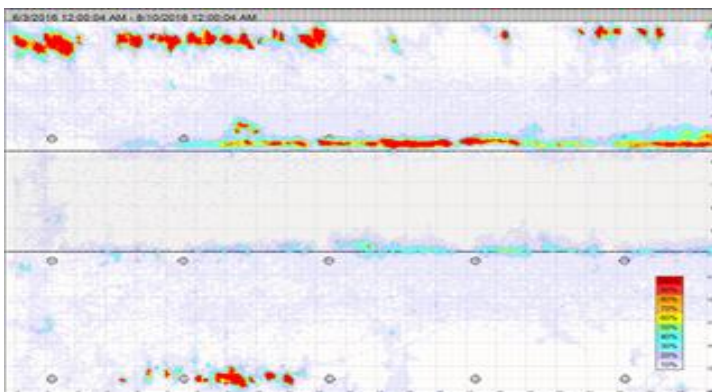


Historical traffic analysis:

- Tag position history
- Path monitoring
- Analysis of the behavior of the object
- Optimization of objects patch in production environment

Area events monitoring / analysis:

- Definition of own zones
- List of zones events (entrance / exit from the zone)
- Residence time of the object in the zones
- Charts with time spent in the defined zones
- Comparison of time spent in defined zones



Heat maps analysis:

- Objects activity monitoring
- Visual comparison of data from objects position history
- Activities zones detection

RTLS Usage

Advantages of RTLS technology:

- ▶ RTLS system can offer reduction of enterprises' activities costs, by monitoring and optimizing processes in selected aspects of the company's operations, related to the analysis of the position of objects, triggering operations related to the movement of objects and following the appearance of objects in designated zones.
- ▶ Biocontrol's RTLS allows integration with internal enterprise management systems by providing a set of access interfaces, such as REST API, database, TCP server.
- ▶ Biocontrol is able to adjust the range of transmitted information from tags to the needs of the company (e.g. real-time information about battery voltage in electric forklift, product's temperature, alarm notification by an employee, etc.)

Location technology can be applied in:

- ▶ object tracking and monitoring,
- ▶ production management in industry,
- ▶ logistics,
- ▶ process automation based on object position analysis,
- ▶ process of monitoring events on the production line,
- ▶ internal transport in the company,
- ▶ location of personnel, pallets, tools, equipment in the area of the company's halls and buildings
- ▶ helps finding bottle necks in production processes
- ▶ real-time information about the status of assembly
- ▶ automation of production management based on object position (integration with ERP systems)
- ▶ improvement of people safety in hazardous areas. Evaluation and control of safety procedures